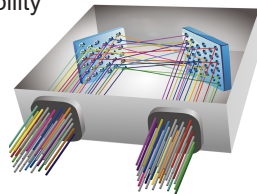




- Proven MEMS technology
- Lifetime >  $10^9$  switch cycles
- No dithering or active alignment artifacts
- Switches and holds dark fiber connections
- Low insertion loss with excellent stability
- Compact and lightweight
- Asymmetric MxN available



- Headquartered in California since 1986
- US based in-house MEMS fab
- Over 3 million MEMS mirrors produced since 1999
- Manufactures TAA compliant products

**SX2 - P - 9 - T - N -**

\*Tolerance is +/- 0.05 m

# MEMS 32X32 OPTICAL MATRIX SWITCH MODULE

## SX2 Model, Single Mode Fiber, Performance Grade

### OPTICAL SPECIFICATIONS<sup>1</sup>

Operating Wavelength	1260 to 1675 nm
Insertion Loss <sup>2</sup>	< 0.8 dB
Loss Repeatability <sup>3</sup>	+/- 0.01 dB
Connection Stability <sup>4</sup>	+/- 0.01 dB
Connection Stability (Short Term) <sup>5</sup>	+/- 0.005 dB
PDL	< 0.1 dB
WDL <sup>6</sup>	< 0.3 dB
Crosstalk	< -70 dB
Back Reflection	< -50 dB
Optical Transition Time <sup>7</sup>	< 25 ms
Switch Lifetime	> 1 Billion Cycles
Input Power Range	Dark to +27 dBm

- 1. Measured separately for each Test Wavelength at 23°C
- 2. Measured with 3-jumper method or equivalent. See TIA/EIA 526-7
- 3. Over 100 cycles
- 4. 1 Hz sampling rate for 15 min
- 5. 10 KHz sampling rate for 10 sec
- 6. Test Wavelength ±20 nm
- 7. Optical transition time for all ports switching concurrently, not including command processing overhead

### ELECTRICAL SPECIFICATIONS

Module Power Consumption	5.6 W max. Operating 8.6 W max. Start Up
Supply Voltage	12V DC
Module Interface	16-Pin Samtec
Module Control	USB, RS232, I <sup>2</sup> C

### ENVIRONMENTAL SPECIFICATIONS

Operating Temperature	0 to 50°C, < 85% RH
Storage Temperature	-40 to 70°C, < 40% RH

### MECHANICAL SPECIFICATIONS

Module Size	158 mm x 128 mm x 33.7 mm
Module Weight (with fibers)	0.87 kg

